

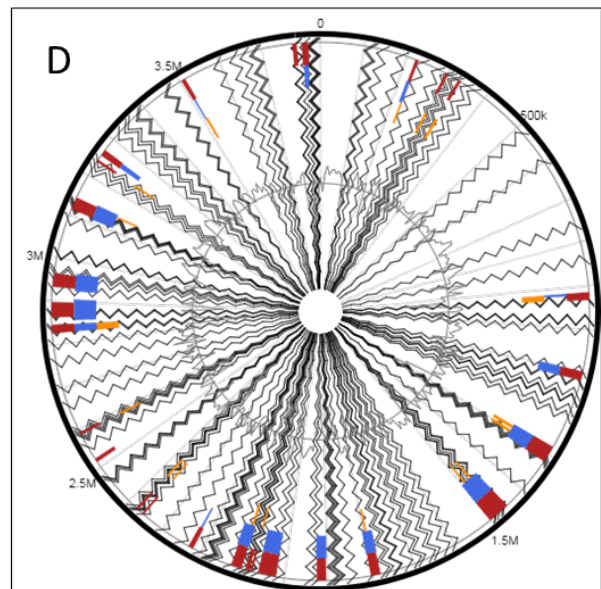
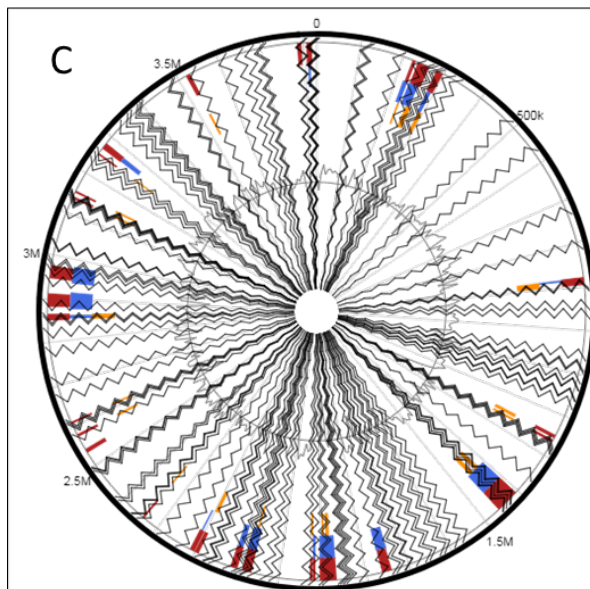
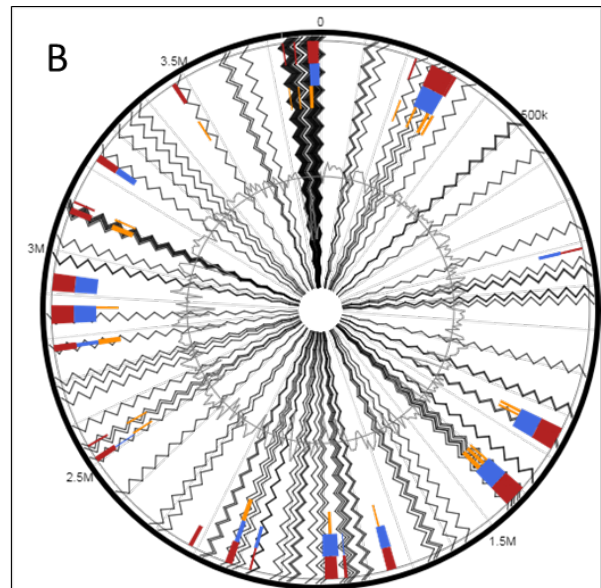
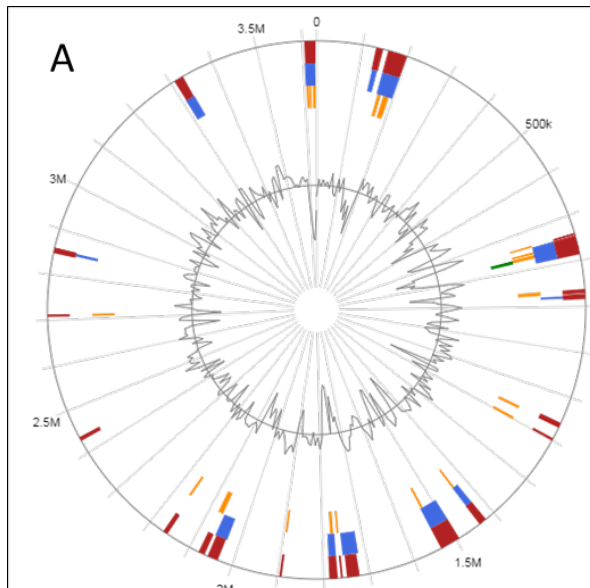
Genomic islands

Supplementary file-4A

***Edwardsiella ictaluri* genomic islands**

A-*Edwardsiella ictaluri* RUSVM1, B-*Edwardsiella ictaluri* ATCC 33202

C-*Edwardsiella ictaluri* LADL11-100, D-*Edwardsiella ictaluri* LADL11-194



***Edwardsiella piscicida* genomes genomic islands**

E- *Edwardsiella piscicida* ACC351, F- *Edwardsiella piscicida* ETW41, G- *Edwardsiella piscicida* JF1305

H- *Edwardsiella piscicida* S11-285, I- *Edwardsiella tarda* EIB202, J- *Edwardsiella tarda* ET883

